



Global Disaster Information Network GDIN
Right Information, Right Format, Right People, On Time



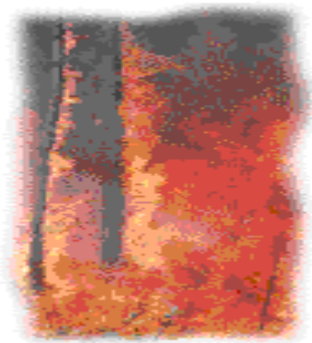
GDIN proposal to support Native Americans





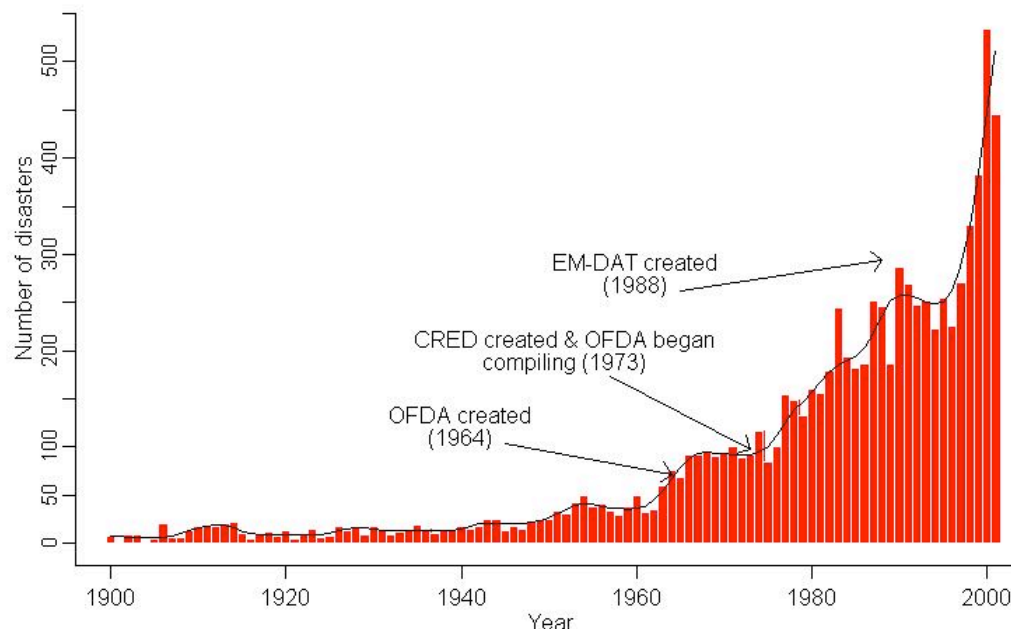
Natural Disasters are a Global Risk

Disasters annually kill more than 133,000 people, make more than 140 million homeless, and cost \$440 billion in insured property damage.



Future disasters could cost more than \$150 Billion each.

Natural disasters reported



EM-DAT: The OFDA/CRED International Disaster Database
(<http://www.cred.be>)



Disasters Harm Indian Land

- **Katrina:** Tribes were hurt and received little help.
- **2003:** Wildfires in Southern California burned over 29,000 acres of tribal land and more than 100 homes in San Diego County.
- **2002:** Droughts caused major crop and wildlife losses, and risks from fires.
- **2001:** Winter storms caused severe problems in Big Crow reservation.
- **1996:** Floods in the Northwest, wildfires in the West and Rocky Mountain States and hurricanes on the East Coast caused devastating damage on Indian Land.

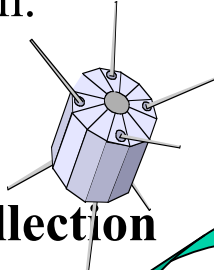




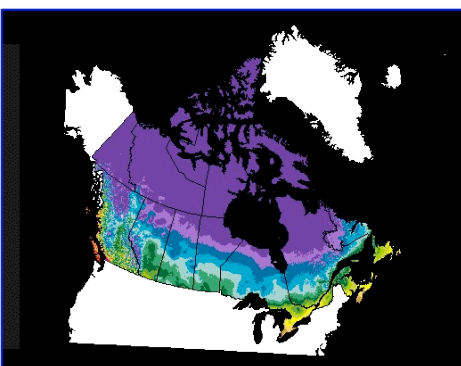
The GDIN Proposal

Mission:

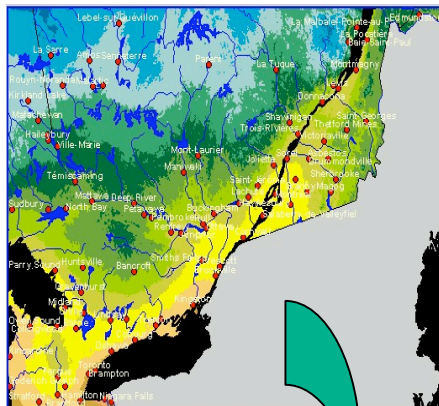
To upgrade how indigenous and remote people receive and use disaster information.



Imagery and Data Collection



Network Analysis



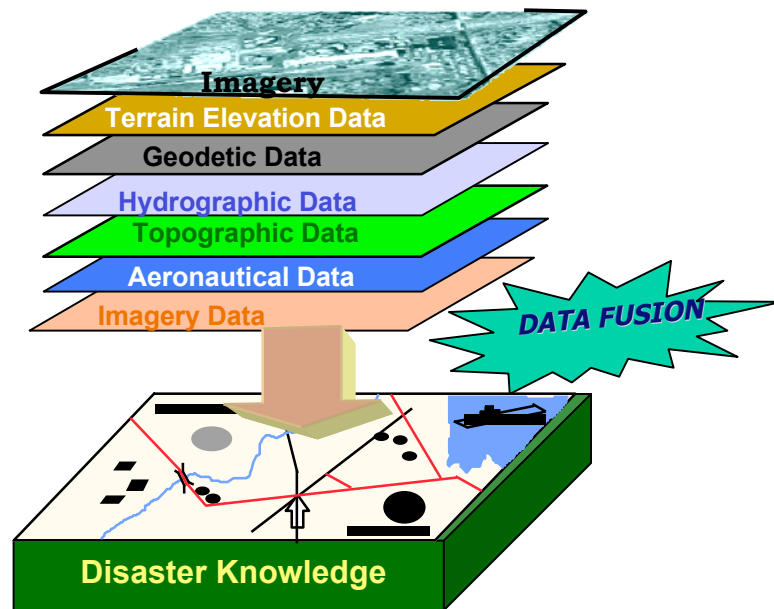
Shape	Point	Point	Point	Point
Latitude	65.595	65.595	65.595	65.595
Longitude	-117.918	-117.918	-117.918	-117.918
Mmdd	716	717	718	719
Province	NT	NT	NT	NT
Ecoreg	68	68	68	68
T	14	17	18	19
Rh	44	45	48	50
Wd	274	173	176	174
Wse	1	10	8	6
Pcp	0	0	0	0
	86	87	87	88
	58	60	63	65
	314	320	327	334
Lsi	2	5	4	4
Bui	79	82	85	87
Fwi	10	17	16	16
Fbp	C1	C1	C1	C1
Cfb	0	0	0	0
TR	1.0	1.1	1.1	1.2
Hfi	6	70	47	60
Res	0.0	0.2	0.1	0.2
Rep_date	20000716	20000717	20000718	20000719
Pass	day	day	day	

Knowledge sent to the Field





Examples of Disaster Information



- Where Am I?...
- Where are the relief workers?
- What do I contact relief workers?
- Where are the victims?
- How do I contact victims?
- Where are the hazards?
- How do I get from here to there?
- What is the Environment?
- What roads work?
- What are the diseases?...

GDIN fuses information from government and private sector sources in America and abroad to save lives.



Barriers to Sharing Information

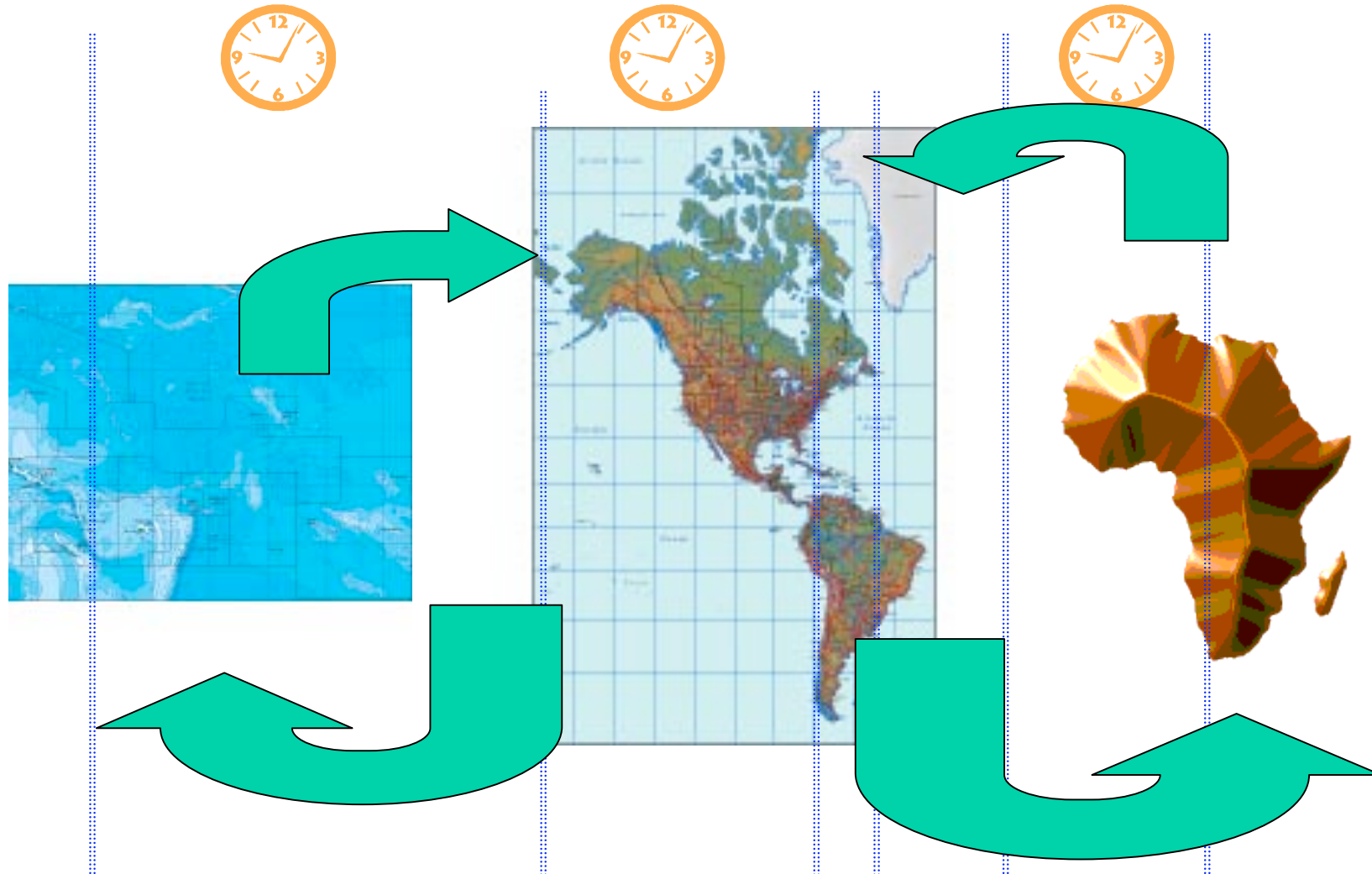
- Indigenous people around the world lack networks and processes across tribes to integrate disaster information.
- Lack of partners around the world to provide a “total picture.”
- Disaster information often is not in useful format – thus it can’t be used when and where needed.
- Poor telecommunications endangers the public and disaster managers.



Photo by Larry Roeder on a UN mission in rebel-held South Sudan

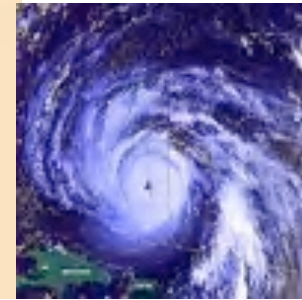


Potential Global 24/7 Network of Indigenous Peoples Starting in the Americas.



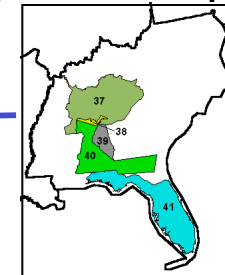
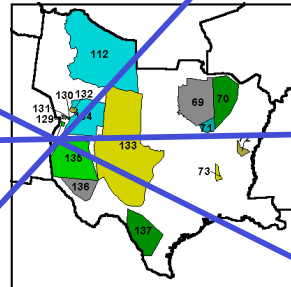
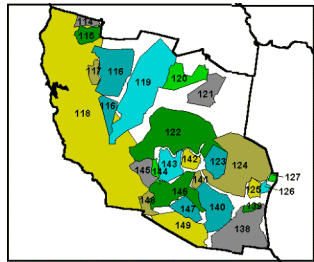


GDIN Node System Providing 24/7 Coverage to Native lands



Response

Early Warning and Prepare



Inter-tribal staffed and networked Operation Centers provide critical information for all phases of tribal disaster management.



Tribal sovereignty is Enhanced

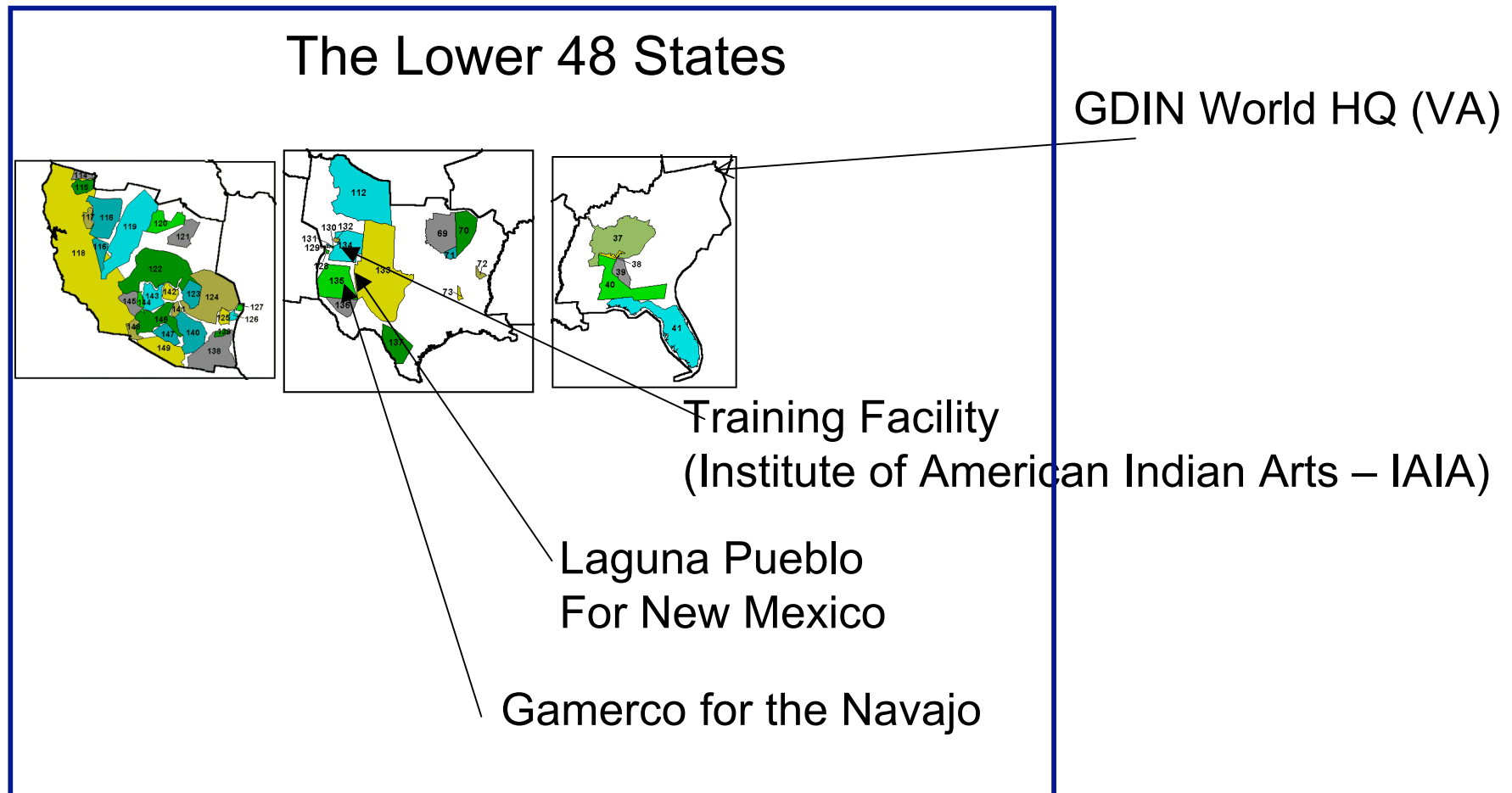


Education



The Americas Pilot Project

Tribes are Grouped into clusters in Alaska and the lower 48, each with a Node as their link to a National Native American Network that is part of a Global Indigenous System.





Day-to-Day Functions

Small three officer staff plus clerical support do core disaster information: **Analyst, Profile Officer and Senior Watch Officer.**

In addition, space is provided for task forces, the Public and intertribal exercises.



Task Force Room



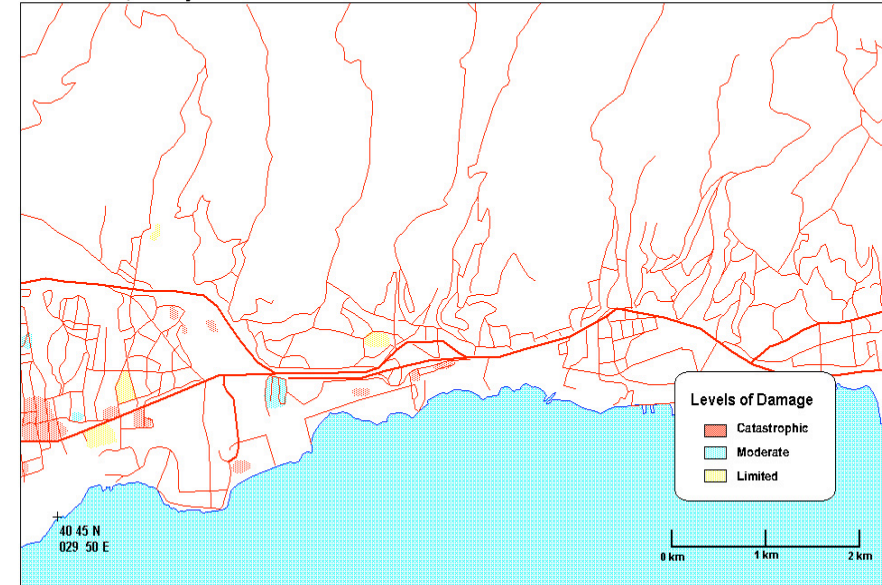
Public Meeting and Research Area



How Nodes Support Each Other

Screenshot of a software interface showing a table with columns: Fuel type, Fuel use, CO₂ emission, CH₄ emission, N₂O emission, Fuel conversion efficiency, F & D, and GHG. The table contains data for various fuel types and their associated emissions and efficiencies.

Earthquake Damage Derince East, Turkey



Profiles developed on hazards and the capacity of users to receive & use information.



Emergency strikes or early warning is seen by GDIN partners



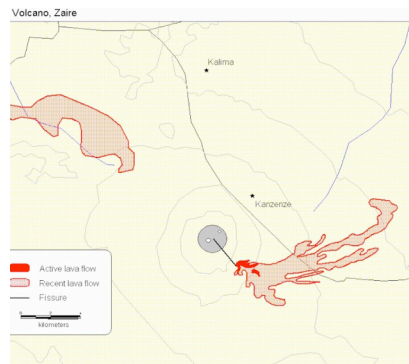
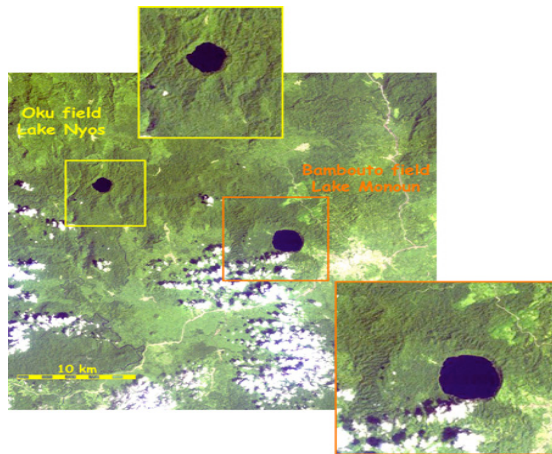
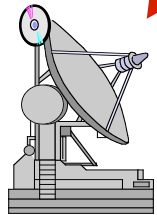
GDIN HQ and tribal partners swing into action to provide the right information in the right format to the right disaster managers

Part of eventual GDIN Global Service



Making and Sharing Information

Nodes gather the best available data from a variety of sources in order to develop the best information.



The Nodes then fuse the data into products pre-designed by the tribes. Local capacity doesn't matter.

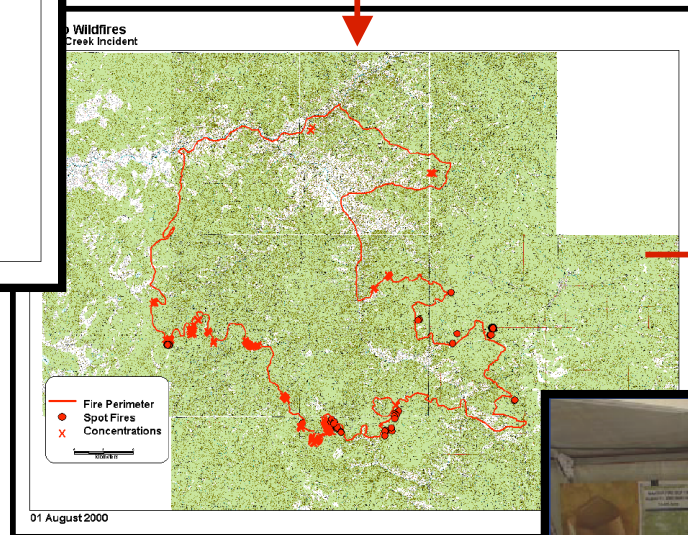
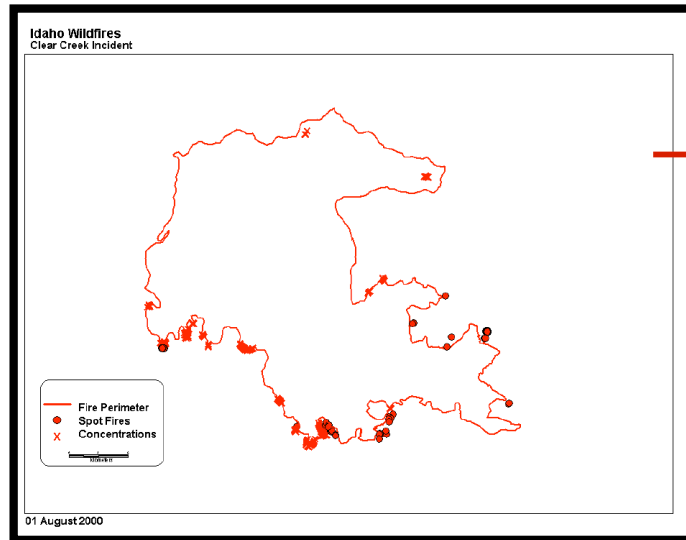
The final product can be disseminated via the internet, radio or other means to Tribal Leaders in the field or HQ

Products on this page were provided by USGS, the US Department of State and LM Ericsson





Example of the Right Information in the Right Format

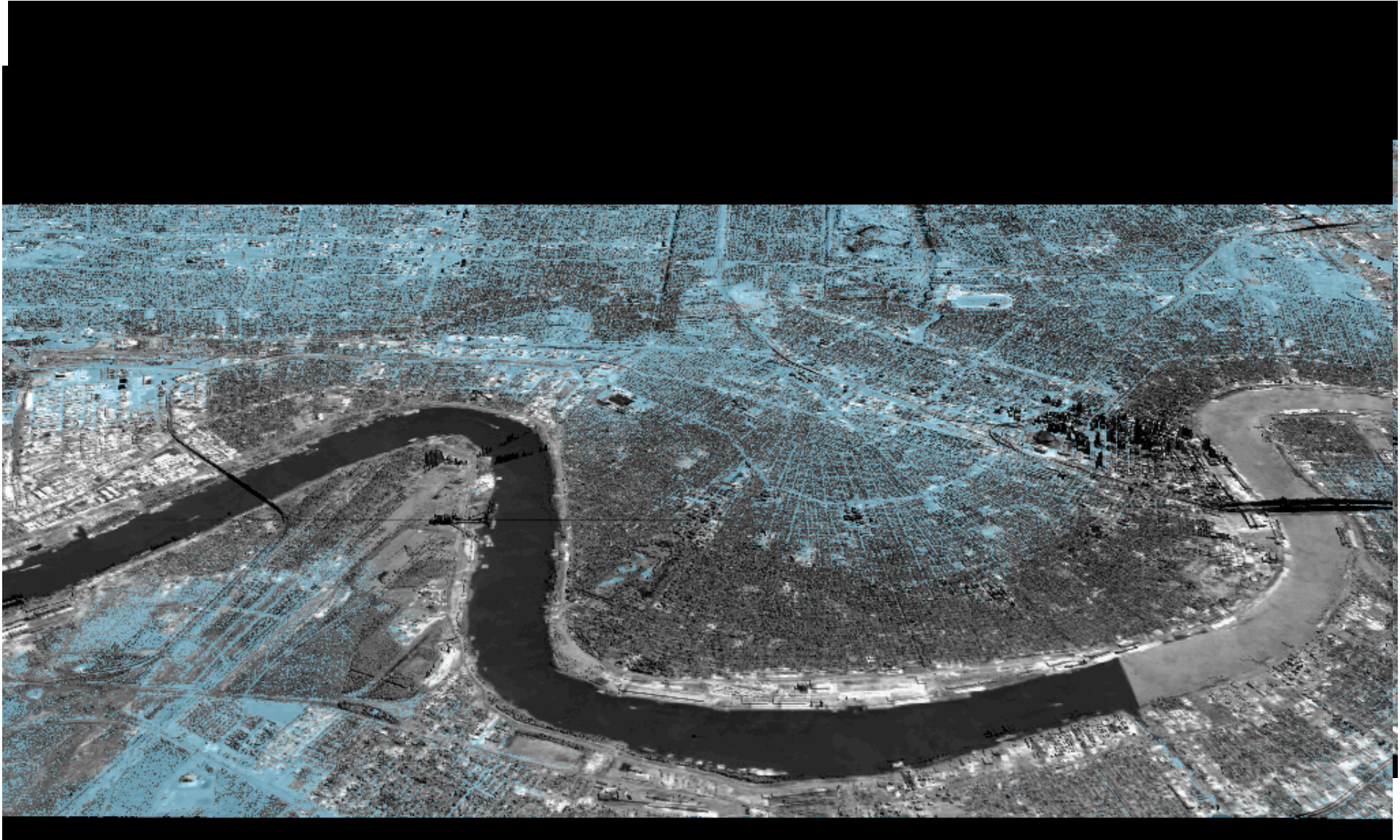


Satellite Data on a Fire Line is overlaid on a existing map of a forest used by Firefighters.







Visualize a Crisis Before it Happens

If we can do this, we can help people reduce their risks.

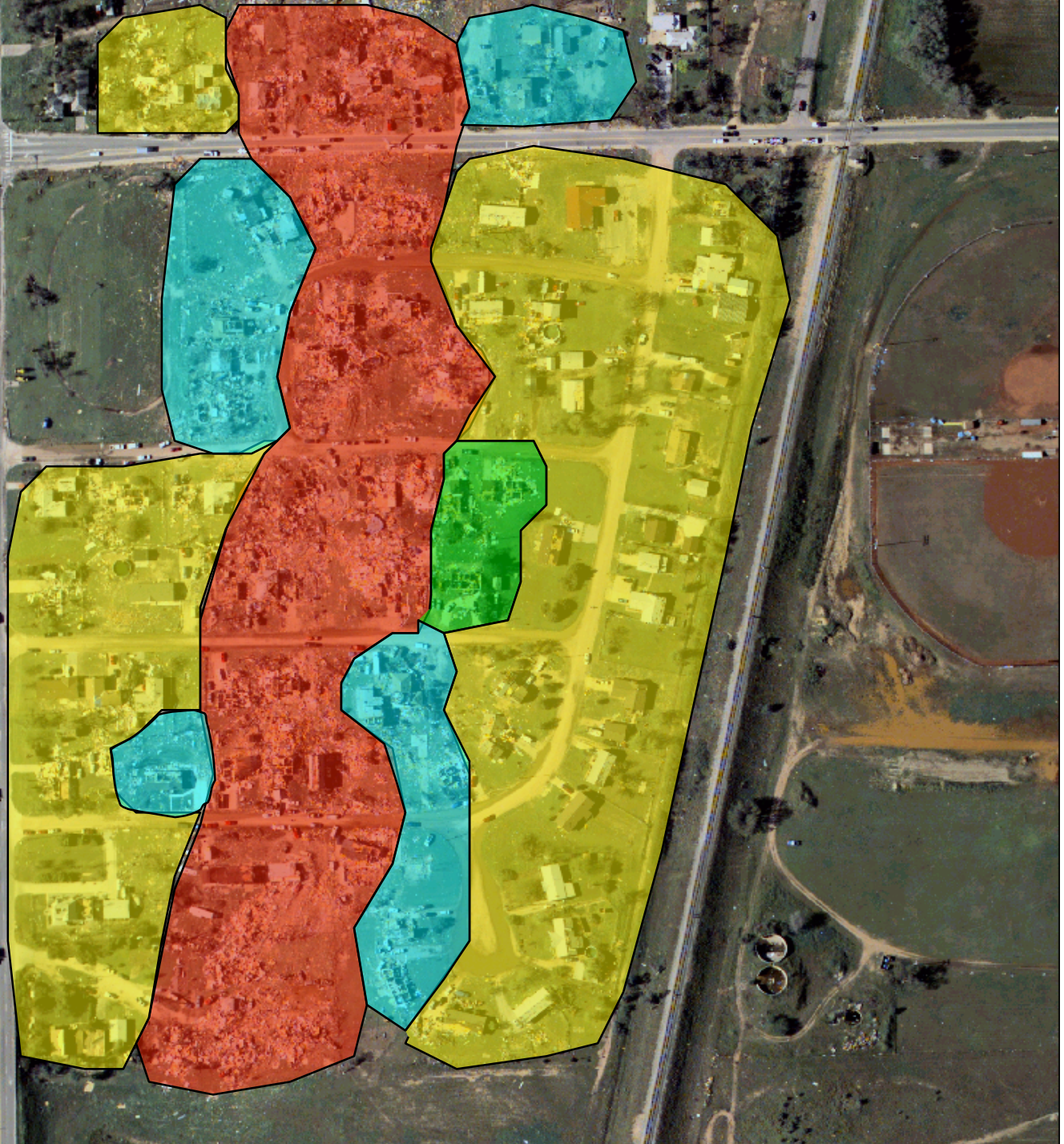


Levels of Damage

	Catastrophic
	Extensive
	Moderate
	Light

Here we combine data from photos from many sources and use models to display a map showing Tribes how to prioritize.

The same tool can be used to plan for future disasters and investments.





Protect Sensitive Information

1. Many sites on Native American soil are sensitive for cultural, economic and religious reasons.
2. Many sites are also sensitive for security reasons.

GDIN commits to protecting this information and in some cases not even asking for it.





Remember to think Global



- Think big; start small; early successes.
- Beginning with the Navajo and Laguna, IAIA and others
- Eventually help indigenous people around the world.



What's Next?



- Funding
- We have a good idea, based on sound experience.
- We plan to approach private donors and the Government.
- We need your help now to develop a donor list.



GDIN's Rules of Success



- Culture must be protected.
- Tribal secrets stay secret.
- Tribal Government Rules. GDIN only helps.
- Tribes must help each other.
- GDIN partners with local and federal programs – doesn't replace them.
- No one is left out.
- Begin at home but think globally.
- Indigenous people around the world need our help.



GDIN Contacts

Larry Roeder, GDIN Executive Director

David Baxa, GDIN Fund President

Joe Garcia, Chairman, Standing
Committee on Native American Disaster
Information Needs.

Richard Luarkie, Pueblo Laguna

Glenda Davis, Navajo Nation GDIN Team Leader
Ramos Suina, IAIA Tribal Liaison

- www.gdin.org
- gdincommunity@hotmail.com
- Phone: 703-327-0057
- Address: 26128 Talamore Drive
South Riding, VA 20152